

KEY INVESTOR INFORMATION – OPTICALS 202608

This document provides key information on a financial product (the Options). It is not an advertising document. The information in contains are provided to you according to legal obligations, to help you understand in what participating into this Options Plan consists exactly and what are the related risks. It is highly recommended that you read this document before making a decision on those Options.

Product

Call Option on the SICAV AMUNDI STOXX EUROPE 50 UCITS ETF ACC, a fund of Invesco Markets plc, emitted by Hilbert Investment Solutions and offered to the employees of its clients only.

DISCLAIMER : This is a complex product that can be difficult to understand.

What is this product?

TYPE

Derivative. ETF Options are considered derivatives under Annex I, Section C of MiFID Directive 2014/65/EU.

OBJECTIVES

A call option gives its owner (long position) the right, during the period fixed in the contractual modalities, to buy a defined quantity in the underlying asset at a pre-determined price (exercise price or strike). The call option writer (Optiniti SRL) undertakes to deliver the underlying asset if the option is exercised by the buyer and to pay the sale price of the product (determined by using the Black & Scholes formula) if the option is sold to them.

Each options serial has its own maturity date, after which the product will expire. An open position can be closed before the maturity date by entering into a closing transaction.

All contractual specificities are available in the Options Plan documentation that is made available in the dedicated Platform.

Positions in ETF Options may be subject to adjustments due to corporate actions on the underlying ETF's shares. The adjustments will be applied in accordance with the corporate action policy.

INTENDED RETAIL INVESTORS

This product is not designed to be marketed to a specific type of investor or to fulfil a specific investment objective or investment strategy. A retail investor should become familiar with the characteristics of this product to make an informed decision on whether or not this product fits their investment needs. If in doubt, a retail investor should contact their broker or investment adviser to obtain investment advice.

What are the risks and what could I get in return?

RISK INDICATOR

Summary Risk Indicator



The summary risk indicator is a guide to the level of risk of this product compared to other products. It shows how likely it is that the product will lose money because of movements in the markets. We have classified this product as 7 out of 7, which is the highest risk class.

Be aware of currency risk. When the product is denominated in a currency other than the home currency of the investor, the return, when expressed in the home currency of the investor, may change depending on currency fluctuations. This risk is not considered in the indicator shown above.

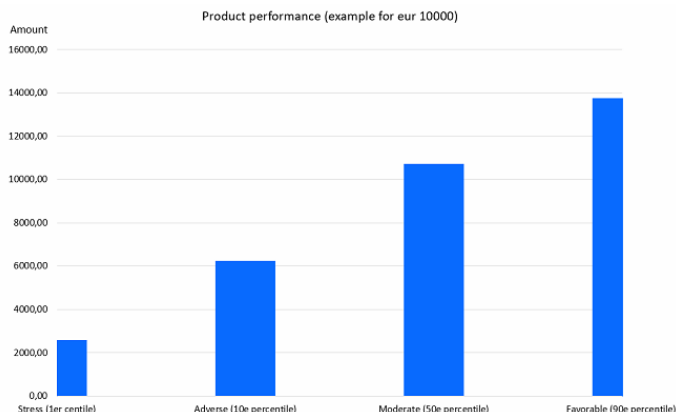
The tax legislation of the retail investor's home Member State may have an impact on the actual investment result.

PERFORMANCE SCENARIOS

The profit or loss potential of a call option on the expiration date depends on the exercise price and the premium paid for a long position. The price of the option premium depends on several factors, such as the price movement of the underlying asset and interest rates.

The characteristics of a call options and an explanation of the profit and loss profile is shown below. The examples and the graphs demonstrate the profit and loss profile of an individual option. The graphs illustrate how your investment could perform. You can compare them with the pay-off graphs of other derivatives. The graph presented gives a range of possible outcomes and is not an exact indication of what you might get back. What you get will vary depending on how the underlying will develop. For each value of the underlying, the graph shows what the profit or loss of the product would be. The horizontal axis shows the various possible prices of the underlying value on the expiry date and the vertical axis shows the profit or loss.

The figures shown include all the costs of the product itself, but may not include all the costs that you pay to your advisor or distributor. The figures do not take into account your personal tax situation, which may also affect how much you get back.



WHAT HAPPENS IF OPTINITI SRL IS UNABLE TO PAY OUT?

The Product is not covered by any statutory investor compensation scheme nor by any guarantee scheme.

WHAT ARE THE COSTS?

There are no one-time, recurring or incidental costs associated with this product. This product is intended to be offered to you free of charge and only the related tax is payable by the product holder.

HOW LONG SHOULD I HOLD THE PRODUCT?

There is no recommended holding period for this product. Each option series has its own maturity date, after which the product will expire. Options can be held until expiration. A long position can be closed by entering a sell order.

HOW CAN I COMPLAIN?

Any complaints regarding the conduct of the person advising or selling the product may be addressed directly to that person.

Complaints about the product can be sent by e-mail to the following address: support@optiniti-group.com.

OTHER RELEVANT INFORMATION

The information contained in this Key Information Document does not constitute a recommendation to buy or sell the product and is not a substitute for individual consultation with your banker or advisor.

This product may not be offered or sold, directly or indirectly, in the United States of America or to U.S. persons. The term "U.S. person" is defined in "Regulation S" under the "U.S. Securities Act of 1933" (Securities Act). The offering of this product has not been registered under the Securities Act.

Disclaimer: The English language version is the definitive version. In the case of any conflict between the English version and a version in another language, the English version shall prevail.